

FIXED PRICE
\$622,000*

Images for illustrative purposes only & may depict upgrade options available at additional charges such as lighting, window furnishings, timber look garage door & timber windows. Pricing also excludes features not supplied by Carlisle, inc fencing, landscaping, letterbox, decking & driveway. Facade details inc entry door, window sizes & placements may vary between house types & sizes. Refer to working drawings for specific locations and sizes.

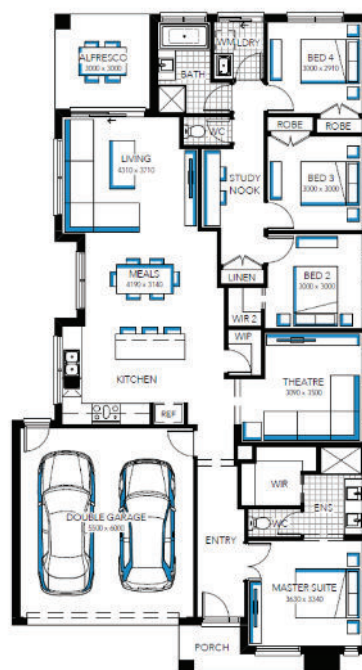
Life's better
when it's included**

Portland 23 Mk2

Lot 120 (400m²) Acacia Village, WOLLERT



- ✓ FIXED PRICE SITE COSTS AND CONNECTIONS
- ✓ DEVELOPER AND COUNCIL REQUIREMENTS
- ✓ DOUBLE GLAZING TO WINDOWS
- ✓ BRIVIS EVAPORATION COOLING
- ✓ CERAMIC TILES OR LAMINATE TIMBER AND CARPET
- ✓ 20MM CAESARSTONE BENCHTOPS TO KITCHEN, ENSUITE & BATHROOM
- ✓ 40MM CAESARSTONE EDGE WITH END PANELS TO ISLAND BENCH IN DOUBLE STOREY HOMES
- ✓ CLEAR GLASS SPLASH BACK
- ✓ TECHNIKA STAINLESS STEEL DISHWASHER
- ✓ 2110MM HIGH ALUMINIUM ENTERTAINER STACKER DOOR AND/OR ADDITIONAL ALUMINIUM SLIDING DOOR TO ALFRESCO
- ✓ ALARM SYSTEM WITH MOTION DETECTORS
- ✓ REMOTE CONTROLLED GARAGE DOOR WITH THREE TRANSMITTERS
- ✓ COLORCOTE METAL ROOF TO SINGLE STOREY HOMES

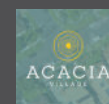


FOR ENQUIRIES CONTACT:

Hong Xu m: 0412205083 | w: carlislehomes.com.au

Or visit: Aurora, 32 - 38 Barham Way, WOLLERT VIC 3750

Open 7 days a week; Weekdays from 12pm - 5pm; Weekends from 11am - 5pm



*Fixed Price current as of 05/03/2020. Pricing based on developer engineering plans & plan of subdivision. Hebel homes may be smaller than dimensions shown on the floorplan due to the external wall thickness, see working drawings for Hebel home dimensions. Confirm land prices and availability prior to purchase. Community Infrastructure Levy & Asset Protection not included in pricing and must be arranged directly by client with developer (where applicable). Subject to developer & council approval. Package Price does not include any costs associated with Developer's Corner Façade treatment requirements (which will be priced by Carlisle Homes by way of Post Contract Variation), stamp duty, government, legal or bank charges. Refer to working drawings for specific locations and sizes. Alterations may incur additional charges. Carlisle reserves the right to withdraw or amend pricing, inclusions & promo without notice. Bushfire (BAL) requirements will be credited back to the client if Carlisle Homes receives confirmation that the house is not being constructed in a BAL designated area. This cannot be confirmed until site survey and property information from relevant authorities is received. **Life's better when it's included promotion applies to new quotes & initial deposits on Carlisle's T-range homes from 4th January 2020 & is available only in conjunction with the T-range 365 inclusions. See a Sales Consultant & visit carlislehomes.com.au/disclaimer/ for further details. Registered Building Practitioner CDB-U50143 ©2019 Carlisle Homes Pty Ltd.