

FIXED PRICE TURNKEY PACKAGE



ACACIA VILLAGE
LOT 309
405 EPPING ROAD, WOLLERT 3750



Axton 167
18sq

LOT 309 308M²
Title date N/A

Land \$374,000
Build \$342,825

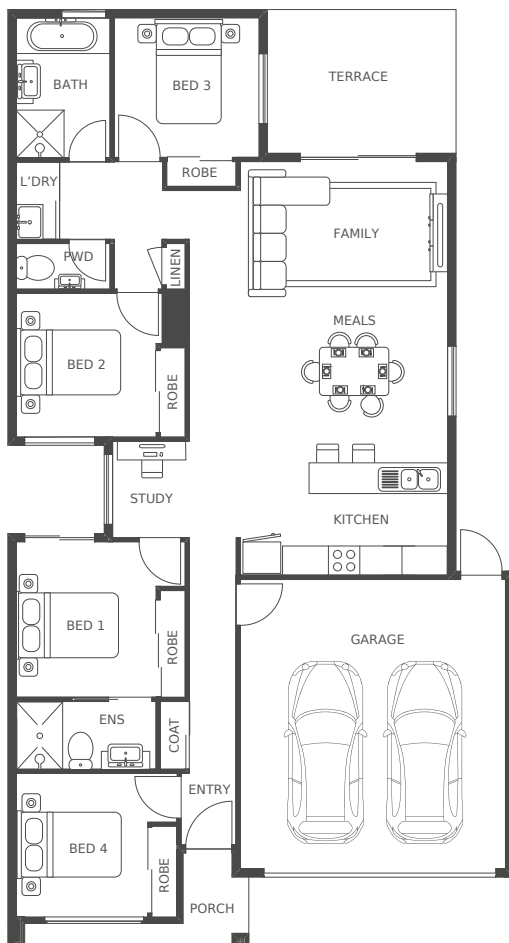
4 2.5 2

PACKAGE PRICE

\$716,825*

KEY FEATURES

- ✓ Fixed site costs and turnkey
- ✓ Colourbond roof and garage door
- ✓ Blackout blinds throughout
- ✓ Timber laminate flooring
- ✓ Reconstituted stone bench to kitchen & bathroom
- ✓ Flyscreens to windows
- ✓ LED downlights throughout
- ✓ Landscaping front and rear
- ✓ Driveway, fencing and paving
- ✓ Estate guidelines included



The plan & design of this house is owned by Creation Homes & under the copyright act of 1968 cannot be reproduced in any shape or form without prior written authorisation from Creation Homes. Any doing so will be liable for action under the act. Plans shown are indicative only and are subject to minor change in the interest of product improvement. *Price current as of 29/06/2023 based on Developer supplied engineering plans and plan of subdivision. Price does not include stamp duty, government, legal or bank charges. Creation Homes (VIC) Pty Ltd Builder's License: CDB-U 49348.